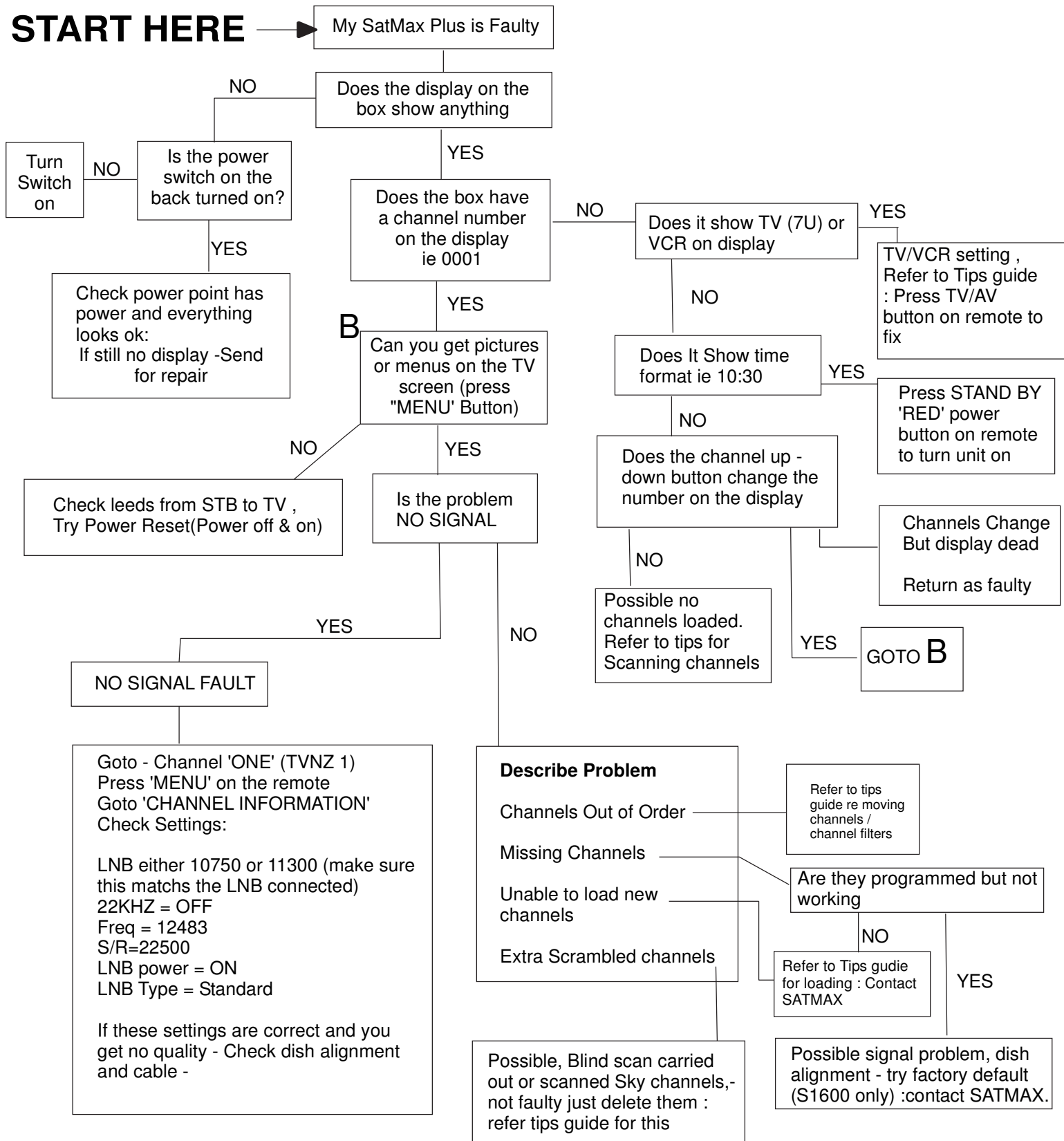


START HERE



NO SIGNAL FAULT

Goto - Channel 'ONE' (TVNZ 1)
Press 'MENU' on the remote
Goto 'CHANNEL INFORMATION'
Check Settings:

LNB either 10750 or 11300 (make sure this matches the LNB connected)
22KHZ = OFF
Freq = 12483
S/R=22500
LNB power = ON
LNB Type = Standard

If these settings are correct and you get no quality - Check dish alignment and cable -

Describe Problem

- Channels Out of Order
- Missing Channels
- Unable to load new channels
- Extra Scrambled channels

Possible, Blind scan carried out or scanned Sky channels,- not faulty just delete them : refer tips guide for this

Refer to tips guide re moving channels / channel filters

Are they programmed but not working

Refer to Tips gudie for loading : Contact SATMAX

Possible signal problem, dish alignment - try factory default (S1600 only) :contact SATMAX.

