

SATMAX HIGH DEFINITION **HD**

Quick set up guide for Satmax SM801 HD receiver MPEG 4 , MHEG 5

WARNING DO NOT POWER THE UNIT UNTIL CABLES ARE CONNECTED - as below.

Connect the receiver to the aerial system via the ANT IN Socket on rear of the receiver

Connect the receiver to the TV using either FREE supplied HDMI cable or composite cables or use YPbPr connection. (cable not supplied - Please note if you use YPbPr connection you must also connect an audio connection for the sound)

HD images upto 720p and 1080i are only available from HDMI and YPbPr connections

HDMI CONNECTION (BEST): connect from socket HDMI-1 on rear of receiver to HDMI in on your TV set

YPbPr CONNECTION : Connect cable from Y, Pb , Pr and L AUDIO , R AUDIO sockets on rear of the receiver to YPbPr and Audio In connections on your TV

COMPOSITE CONNECTION : Connect from VIDEO , L AUDIO , R AUDIO using supplied coloured cables to your 'AV IN' connection on your TV - Please observe colours.

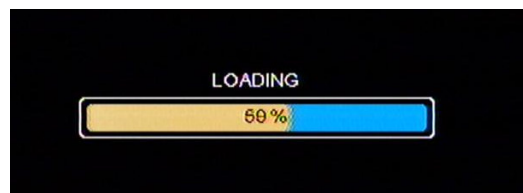
LOOP OUT (L) : This is to supply the aerial connection to another product ie video, sky box,- TV etc

Please note: This is a non modulated output on this receiver. (you are unable to tune this receiver into a normal UHF/VHF TV channel)

ONCE you have connected the receiver using your best option suitable for the TV set you can plug in the power and turn the switch on.

Turn your TV to the correct input ie HDMI , YPbPr or AV1 (refer to your TV manual)

You should see a loading screen as the receiver powers up.



After the loading screen you will get the following menu



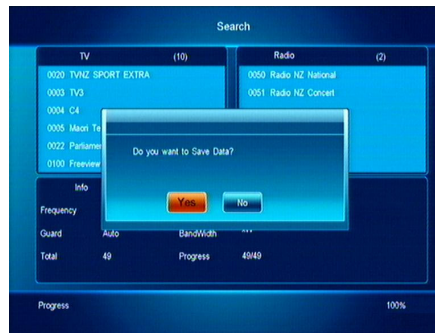
Use your arrow keys on the remote to Highlight the 'YES' as per picture

Then press ' OK' to start scan

The receiver will then start to look for digital freeview channels.



After about 1-2 minutes the receiver should have found the freeview channels and will ask you to save them , Highlight 'YES" and press 'OK'



After a couple of seconds you should have pictures (Tip: if no picture try changing channel)

Now you should be able to enjoy using the SM801 HD receiver.

If your receiver is unable to locate any channels , - Check all your aerial connections, and then 'Auto Search' for channels again in the following menu.



If you are still unable to get any channels please contact your place of purchase for assistance,

You may have signal or aerial issues and may require help to solve this.

For EPG (guide) function press 'EPG' on remote this will launch the EPG supplied from freeview. Please note EPG function becomes available about 10 seconds after changing channel.



Use your arrow buttons to move around the EPG ,

press 'EPG' again for an overview of all channels.

Use 'Yellow' and 'Blue' to change day

Press 'EXIT' to end EPG viewing

Please Note: The remote control has extra buttons on the bottom PLAY , PVR , STOP etc They have been added to the remote for future functions that may be come available when new software is released. - They are for the future use , Software can be upgraded vai the USB connection under the front flap. This is also for MP3 Music and JPEG picture files.



www.satmax.co.nz
 U1,32 Hayton Road , Sockburn
 Christchurch
 Ph 03 343 5565
 Fax 03 343 5567