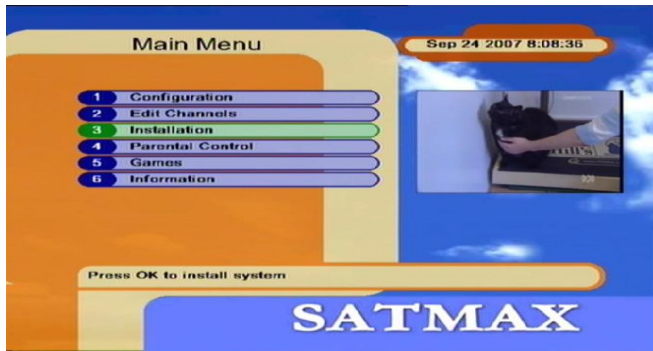


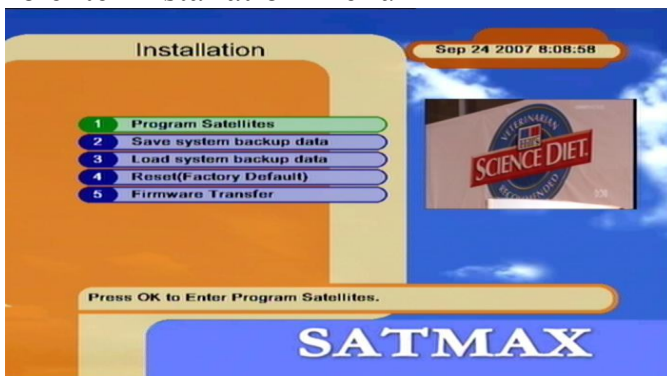
SATMAX PLUS Version 1 : Set Up and Scan Settings

On your Remote press MENU button



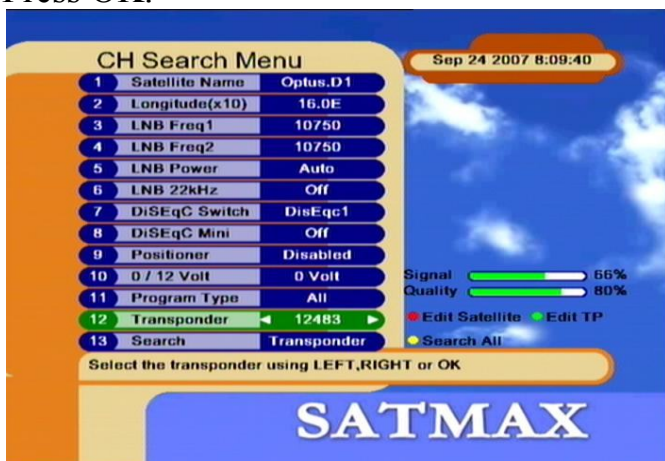
Select option 3 (installation) -- Use Arrow Buttons to move 'highlight bar'
Press OK.

To enter Installation Menu



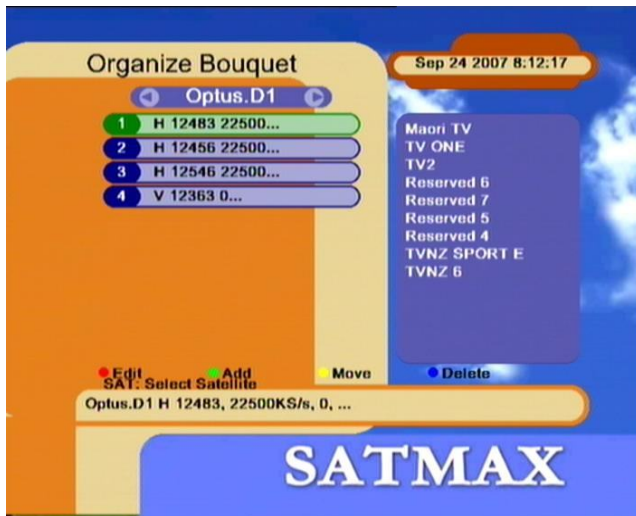
Select option 1 (Program Satellites)

Press OK.



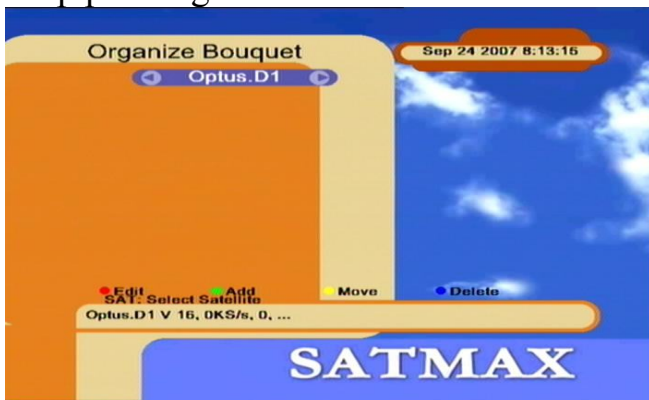
Now you should be in the CH Search Menu.

Press the GREEN coloured button – to enter Organize Bouquet Screen



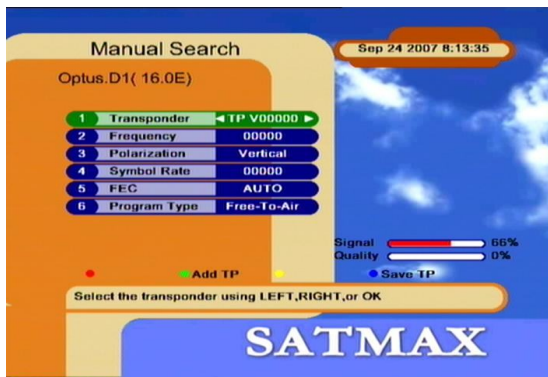
Now here you will see lots of transponder freq's you may see more than the above picture, that's fine you need to delete all the transponders on this screen.

Keep pressing the BLUE coloured button until all transponders have been deleted.



Now you just have to add the correct transponders.

Press the GREEN button to enter details



Now you have the Manual Search Screen.

Here enter the first transponder details as per below

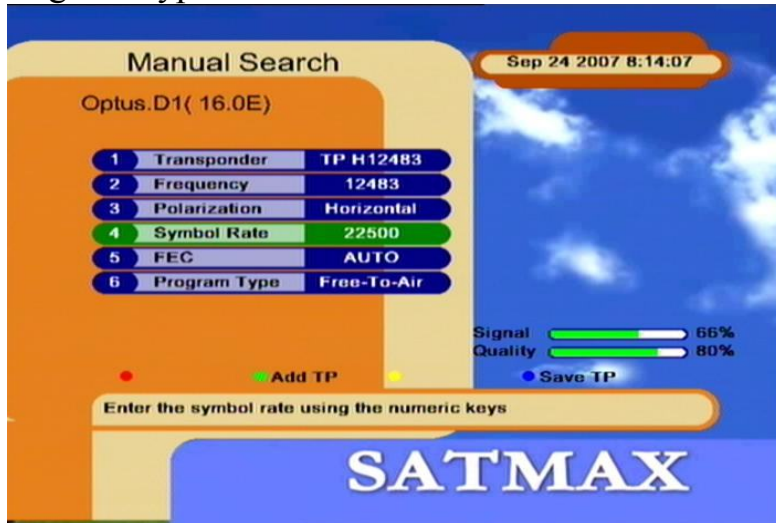
Frequency **12483**

Polarization **Horizontal**

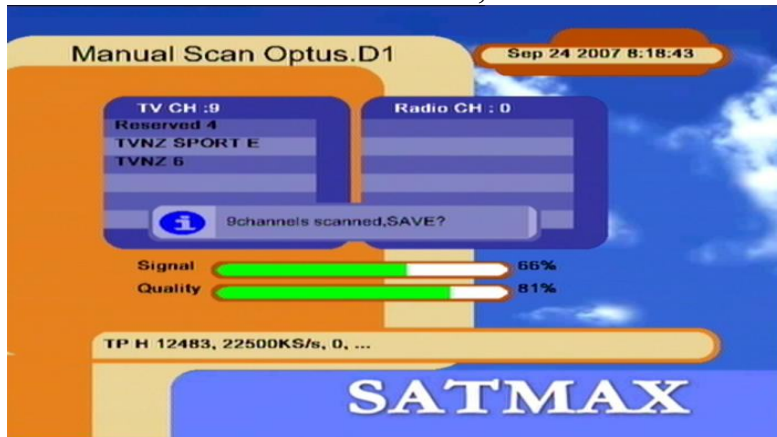
Symbol Rate **22500**

FEC **AUTO**

Program Type **Free To Air**



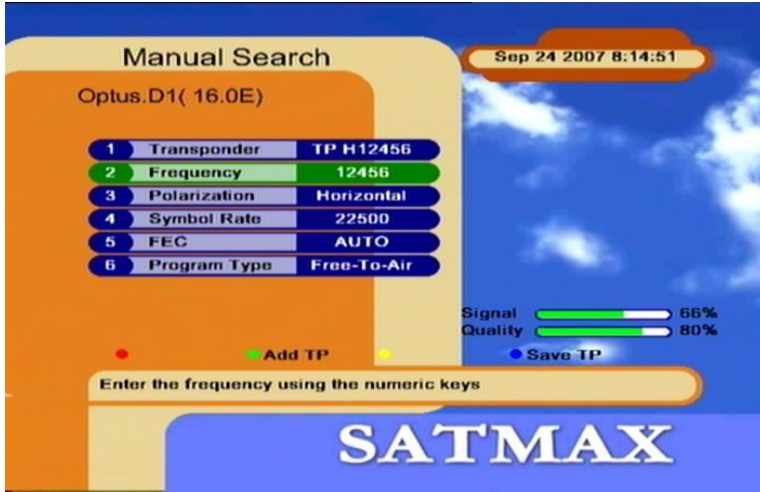
Once you have entered the information.
Highlight 'Program Type' then press OK
this will now scan for channels ,



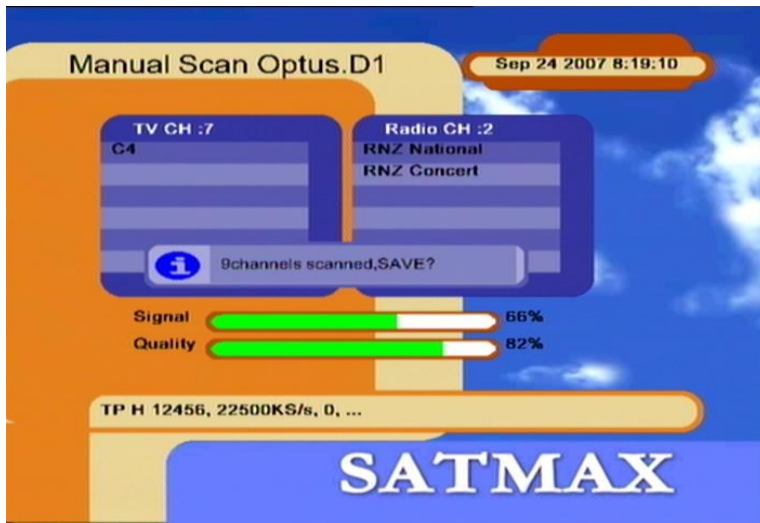
Press OK to save the channels – then the screen will go back to Transponders again

Now repeat Steps as above,
Press GREEN button to Add TP.
Then Enter the Following

Frequency **12456**
Polarization **Horizontal**
Symbol Rate **22500**
FEC **AUTO**
Program Type **Free To Air**



Once you have entered the information.
Highlight 'Program Type' then press OK
this will now scan for channels ,



Once you have pressed OK to save channels ,
you can keep pressing EXIT until you have left the menu's
you should now be able to get your Tv channels

You will now have to order the channels if you want them in the order of TV1 , TV2
Tv3 C4 etc,

Refer to our document on moving channels on a SATMAX PLUS V1.