

## TO SCAN NEW FREEVIEW CHANNELS ON SATMAX PLUS RECIVIER V2

1:

Press Menu Button on Remote Control

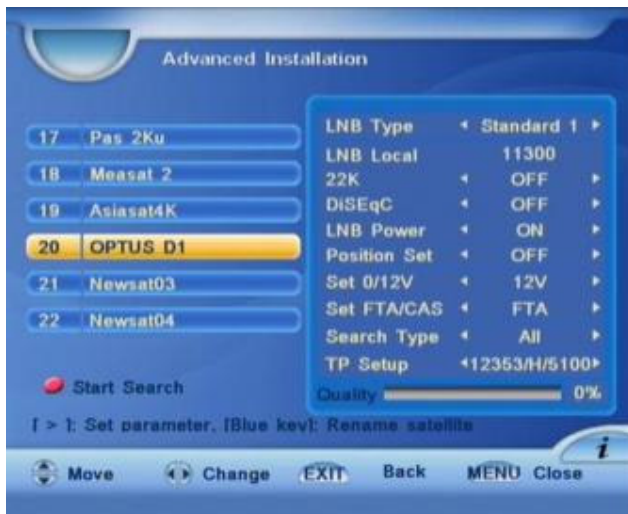
Using arrow buttons , Find “Manage Channel” menu.

Select “Channel Edit” use (OK button to Select) as per picture below.



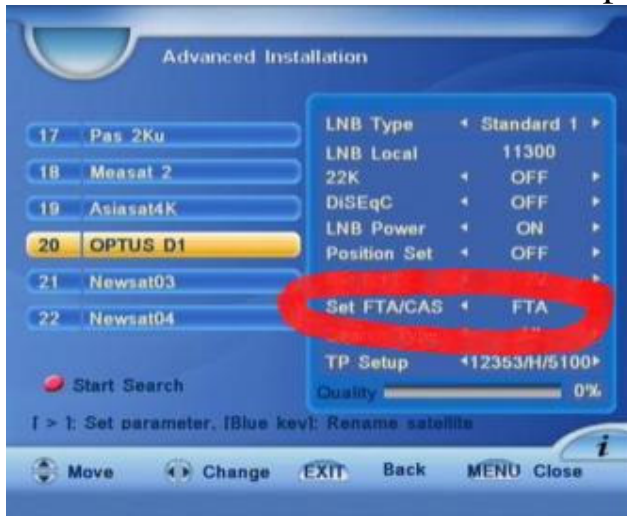
If Required -Enter password , Default is Either 000000 or 556565

Then You Should Get The Following Screen



Use Your Channel up and Down buttons to highlight and find OPTUS D1 or B1 Satellite in the list.

Now: Refer to picture Below.. Your settings on the right (Red selection) Should have FTA Set in the FTA/CAS line. IF it is then jump to Section “B”- if it doesn’t have FTA then keep reading...



If no to above – then follow below.

You will need to change the Sst FTA/CAS to FTA  
Press OK on remote your highlight bar should move across to the right.



Now move highlight bar down to Set FTA/CAS

*As per Below*



Now use VOL (left and right) to select FTA

Once you Have done this continue to Section B

## **SECTION B**

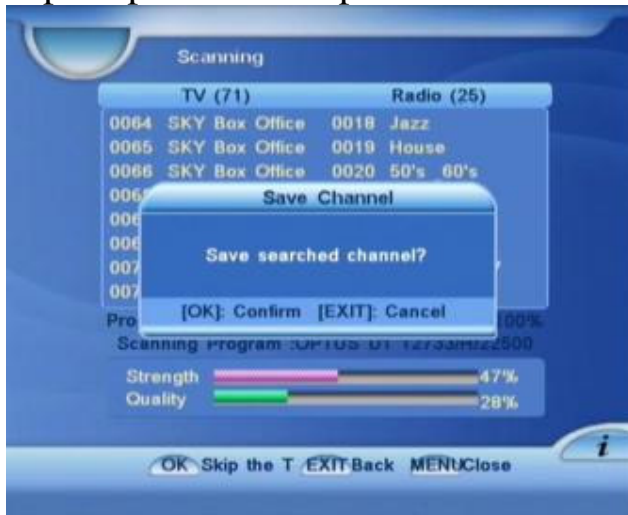
Now Press the **RED AUDIO** Button to Start Search



New Channels Should Arrive. The scanning process may take upto 5 Mins

Once scanned and new channels appear.  
Press MENU to Close

If prompted to save press OK to Save



You are now Done ,

You may need to order channels , if so please download our instructions for this .

If you are unable to find new channels you may need to change the transponder setting for 12456 to HORZ,,,,, refer instructions on web site for changing Polarity

Remember the freq for free view , 12483 and 12456 both S/R = 22500  
Both are 18V HORZ